

ATRx ProxTime Quick Start

www.acroprint.com

ACROPRINT
Time for Business.™

1 Getting Started

For ATRx ProxTime and ATRx10 setup, begin with Step 1; for ATRx20 setup, begin with Step 5.

ATRx ProxTime System includes:

- Attendance Rx™ software (may already be installed, PN: 08-0137-000)
- ATRx ProxTime™ (ATRx 10 Proximity Terminal, PN: 01-0206-000)
- 50 ft. RS232 ATR Communications Cable provided by Acroprint (PN: 72-0195-000)
- RJ11/DB 9-pin ATR Serial Adapter provided by Acroprint (PN: 63-0163-003)
- 12V DC Power Adapter (PN: 56-0126-000)
- 15 Proximity Badges (PN: 14-0123-002)

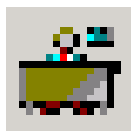
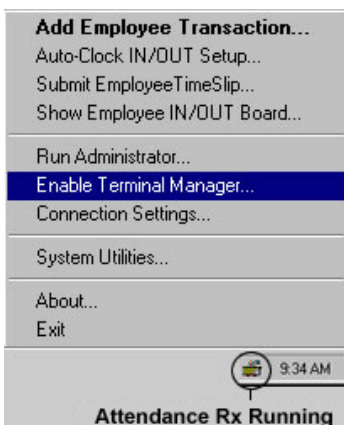
Install Attendance Rx software by inserting CD into CD-Rom (unless already installed). Follow and complete the installation wizard.

To ensure the PC meets the minimum system requirements, see product box or refer to www.acroprint.com.



3 Power Connection

Turn PC on and Attendance Rx software should start. To confirm software is running, a **System Tray Icon** will appear in the bottom right-hand corner of your computer desktop screen.



To enable ATRx Terminal Manager, right click the System Tray icon, select **Enable Terminal Manager**.

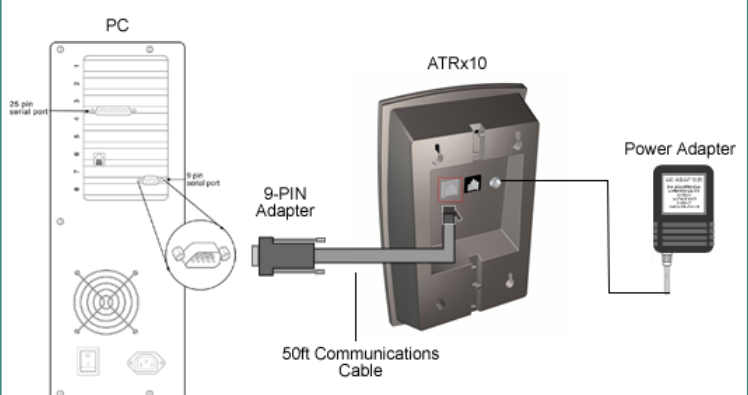
2 Connect ATRx10 to Windows Based PC

1. To avoid damage to the PC port; PC power must be completely shutdown prior to attaching the ATR adapter and ATR communications cable.
 2. Connect ATR adapter and ATR communications cable (this may already be connected at the factory).
 3. Connect the ATR adapter to the serial port on the back of PC.
 4. Connect the ATR communications cable to the white RS232 port on the back of the ATRx10 proximity terminal.
- ** Do not connect to a telephone wall outlet.**
**** Do not connect to a modem port.**
5. Plug the 12V DC Power Adapter into the back of the ATRx10 proximity terminal and the wall outlet. The terminal will display the letters **-PC-** on the LCD screen.

4 Verify Terminal is Communicating with PC

After enabling the Terminal Manager the software will automatically locate the PC serial port. The Time and Day of the week will display on the ATRx10 screen.

Note: If the Time and Day of week do not display, **-PC-** will remain on the ATRx10 screen. If this occurs, repeat Quick Start Step 2 to ensure connections are correct and proceed to Trouble Shooting portion on the reverse side of the Quick Start Sheet.



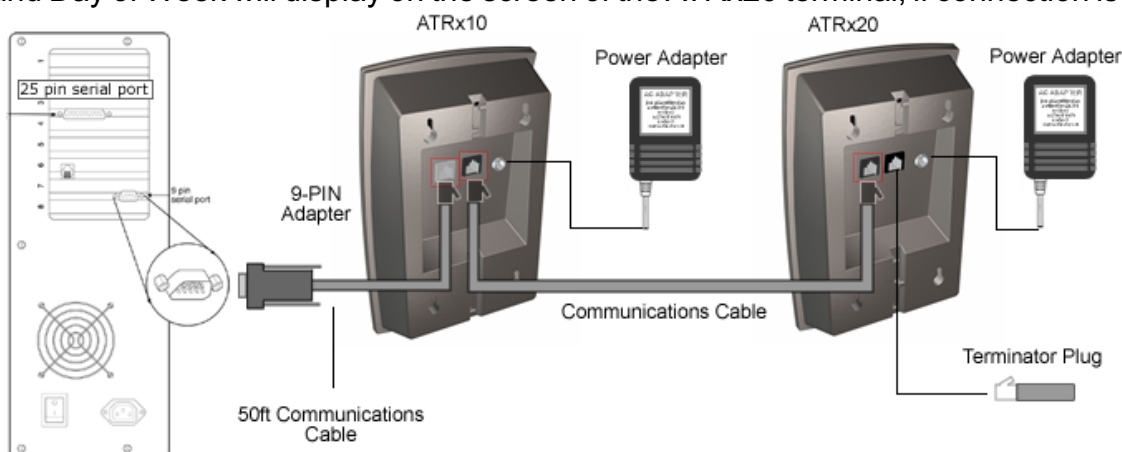
After following these steps, your set-up should look like this diagram.

*Use enclosed wall template and four screws to mount unit to wall stud.

5

Connecting Additional Terminals

1. Confirm PC has power and the Attendance Rx software package is running (refer to Step 3 Power Connection on reverse side of Quick Start).
2. Plug communications cable into the available black port on the ATRx10 terminal. Connect the other end of the cable into the first black port on the ATRx20 terminal.
*This cable is designed for RS485 communications. It is available for purchase through Acroprint. Please call for more information (1.800.334.7190).
3. Insert the Terminator Plug into the remaining open RS485 port on the last ATRx20 terminal that is on the chain of terminals.
4. Plug 12V DC power adapter into the back of the ATRx20 and the wall outlet.
5. Time and Day of Week will display on the screen of the ATRx20 terminal, if connection is established.



6

Troubleshooting the ATRx10 and ATRx20 Terminal Connections

1. Verify you are using the equipment supplied by Acroprint: communications cable, serial adapter, power adapter.
2. Verify Attendance Rx software is running. Refer to Step 3 of Quick Start.
3. Check connections on the back of the PC to confirm the adapter and cable supplied by Acroprint are securely attached to a serial communications port.
4. Confirm the cable supplied by Acroprint is plugged into the correct port on the back of the ATRx ProxTime terminal.
5. Reset the power to the ATRx terminal by unplugging the 12V DC power adapter from wall outlet for two to five seconds, then plug back into the wall outlet.
6. Restart Windows. Once computer login is complete, verify program is running (Refer to Step 3 of Quick Start).

Any additional questions, contact Acroprint's Technical Support Department.

WEB: support.acroprint.com

FAX: 919.872.5967

TOLL FREE: 1.800.334.7190, option 3.

EMAIL: supportdept@acroprint.com

NOTE: This equipment has been tested and found to comply with the limits for a Class A digital device, pursuant to Part 15 of the FCC Rules. These limits are designed to provide reasonable protection against harmful interference when the equipment is operated in a commercial environment. This equipment generates, uses, and can radiate radio frequency energy and, if not installed and used in accordance with the instruction manual, may cause harmful interference to radio communications. Operation of this equipment in a residential area is likely to cause harmful interference in which case the user will be required to correct the interference at his own expense.

This Class A digital apparatus complies with Canadian ICES-003. Cet appareil numérique de la classe A est conforme a la norme NMB-003 du Canada.